

Refrigerator FOUR DOOR SERIES



SmartHome



Download the app
& activate product

USER MANUAL

MDRF632FGD46APD
MDRF632FGD46APW

Warning notices: Before using this product, please read this manual carefully and keep it for future reference. The design and specifications are subject to change without prior notice for product improvement. Consult with your dealer or manufacturer for details.
The diagram above is just for reference. Please take the appearance of the actual product as the standard.

THANK YOU LETTER

Thank you for choosing Midea! Before using your new Midea product, please read this manual thoroughly to ensure that you know how to operate the features and functions that your new appliance offers in a safe way.

CONTENTS

THANK YOU LETTER ----- 01

SPECIFICATIONS ----- 02

PRODUCT OVERVIEW ----- 03

PRODUCT INSTALLATION ----- 05

OPERATION INSTRUCTIONS ----- 09

APP SETUP AND OPERATION ----- 16

CLEANING AND MAINTENANCE ----- 18

TROUBLESHOOTING ----- 19

SPECIFICATIONS

Product model	MDRF632FGD46APW
Fresh Food Storage Compartment Volume	301L
Frozen Food Storage Volume	169L
Rated Voltage	220-240V~
Rated Current	1.8A
Overall Dimension (W x D x H)	833x653x1775

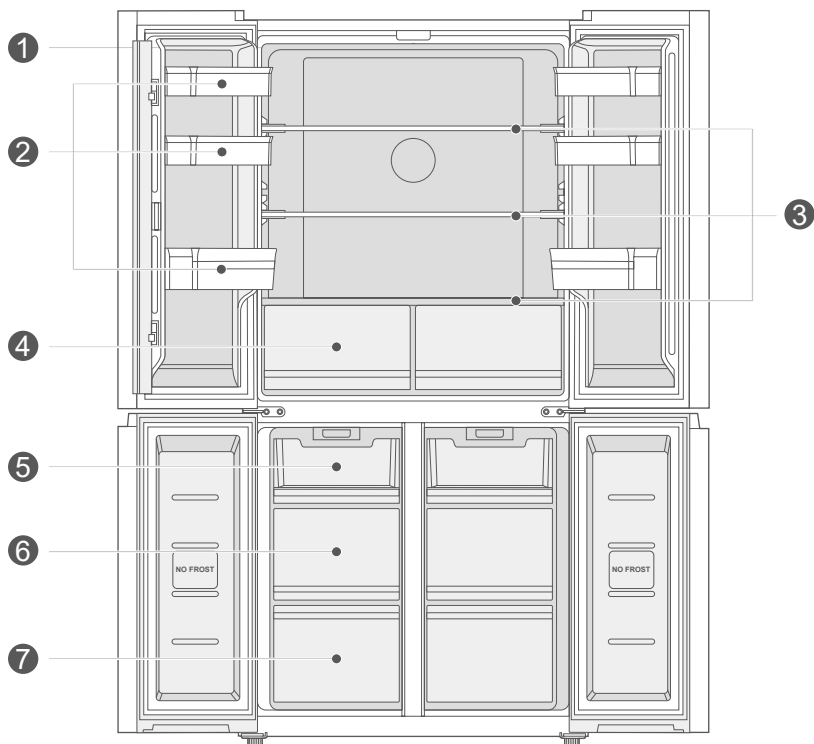
Product model	MDRF632FGD46APD
Fresh Food Storage Compartment Volume	305L
Frozen Food Storage Volume	169L
Rated Voltage	220-240V~
Rated Current	1.8A
Overall Dimension (W x D x H)	833x653x1775

EN

PRODUCT OVERVIEW

Names of components

Normal type



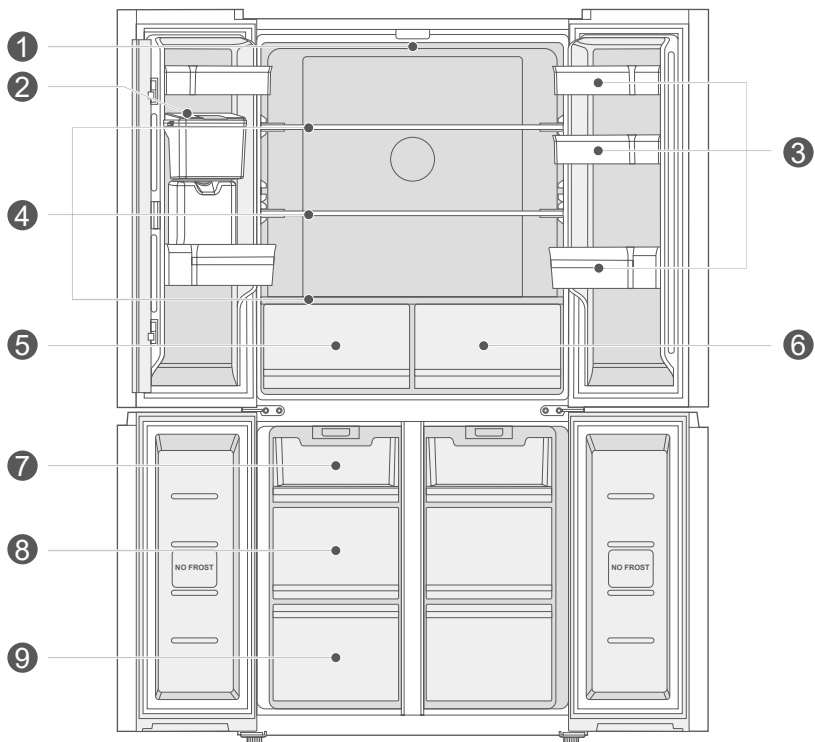
EN

- | | | | |
|---|--------------|---|---------------|
| 1 | LED lighting | 5 | Up drawer |
| 2 | Door tray | 6 | Middle drawer |
| 3 | Glass Shelf | 7 | Down drawer |
| 4 | Big drawer | | |

● ATTENTION

The picture above is only for reference. The actual configuration will depend on the physical product or statement by the distributor

Dispenser type



- | | | | |
|---|-----------------|---|----------------------|
| 1 | LED lighting | 6 | Fruit&Vegetables |
| 2 | Water dispenser | 7 | UP Freeze drawer |
| 3 | Door tray | 8 | Middle Freeze drawer |
| 4 | Glass Shelf | 9 | Down Freeze drawer |
| 5 | Variable zone | | |

ATTENTION

The picture above is only for reference. The actual configuration will depend on the physical product or statement by the distributor

PRODUCT INSTALLATION

Install Instruction

For refrigerating appliances with climate class

- Depending on the climate class, This refrigerating appliance is intended to be used at ambient temperatures range as specified following table.
- The climate class can be found on the rating plate. The product may not operate properly at temperatures outside of the specific range.
- You can find the climate class on the product label.

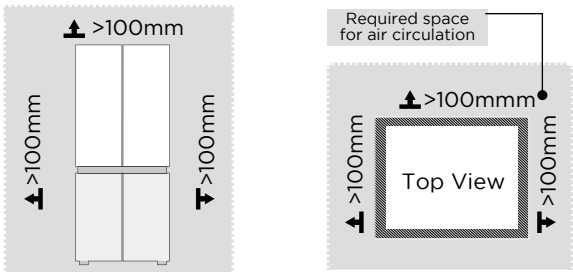
Effective temperature range

- The product is designed to operate normally in the temperature range specified by its class rating.

Class	Symbol	Ambient temperature range °C	
		IEC 62552 (ISO 15502)	ISO 8561
Extended temperate	SN	+ 10 to + 32	+ 10 to + 32
Temperate	N	+ 16 to + 32	+ 16 to + 32
Subtropical	ST	+ 16 to + 38	+ 18 to + 38
Tropical	T	+ 16 to + 43	+ 18 to + 43

Dimensions and Clearances

- Too small of a distance from adjacent items may result in the degradation of freezing capability and increased electricity costs. Allow over 100 mm of clearance from each adjacent wall when installing the appliance.

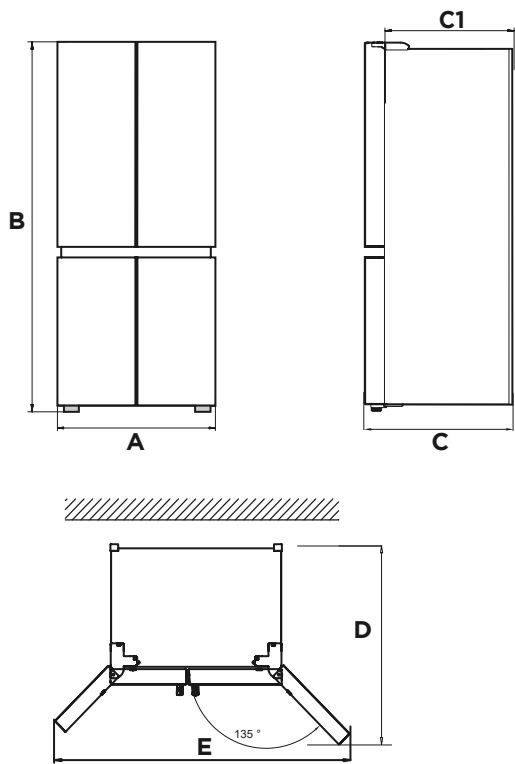


ATTENTION

The picture above is only for reference. The actual configuration will depend on the physical product or statement by the distributor

Space requirement diagram (when the door is open and when the door is closed)

EN



Width	Overall Height	Depth	Without door	Depth doors open 135°	Width doors open 135°
A	B	C	C1	D	E
833	1775	653	570	1000	1400

Notice: All dimensions in mm

Leveling feet

To avoid vibration, the unit must be leveled.

If required, adjust the leveling screws to compensate for the uneven floor.

The front should be slightly higher than the rear to aid in door closing.

Leveling screws can be turned easily by tipping the cabinet slightly.

Turn the leveling screws counterclockwise ↺ to raise the unit, clockwise ↻ to lower it.

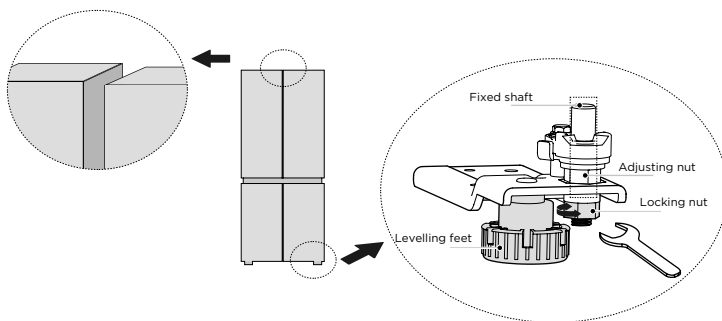
Leveling doors

If the doors are not at the same height, the door can be adjusted with a spanner.

A- To raise the door, turn the nut (1) anticlockwise.

B- To lower the door, turn the nut (1) clockwise.

C- When the door is correctly aligned, fix it with the nut (2).



Moving the appliance

1. Remove all food from inside the appliance.
2. Pull the power plug out, insert and fix it into the power plug hook at the rear or on top of the appliance.
3. Tape parts such as shelves and the door handle to prevent from falling off while moving the appliance.
4. Move the appliance with more than two people carefully. When transporting the appliance over a long distance, keep the appliance upright.
5. After installing the appliance, connect the power plug into a socket out to switch on the appliance.

● ATTENTION

Precautions before operation:

Before making changes the refrigerator must be disconnected from power. precautions should be taken to prevent any personal injury.

Changing the light

- Any replacement or maintenance of the LED lamps is intended to be made by the manufacturer, its service agent or similar qualified person.

ATTENTION

This product contains a light source of energy efficiency class (G).

EN

Connecting the appliance

After installing the appliance, connect the power plug into a socket outlet.

ATTENTION

After connecting the power supply cord (or plug) to the outlet, wait 2 or 3 hours before you put food into the appliance. If you add food before the appliance has cooled completely, your food may spoil.

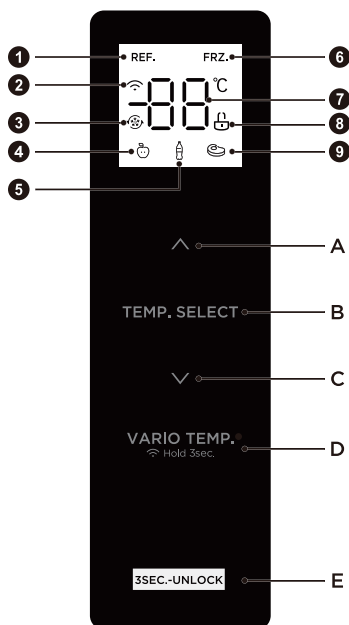
Tips for energy saving

- Do not place the appliance near cookers, radiators or other heat sources. If the ambient temperature is high, the compressor will run more frequently and for longer, resulting in increased energy consumption.
- Ensure that there is sufficient ventilation at the base of the appliance, on the sides of the appliance and at the back of the appliance. Never cover ventilation openings.
- Please also observe the spacing dimensions in the chapter "Installation".
- The arrangement of drawers, shelves and racks as shown in the illustration offers the most efficient use of energy and should therefore be retained as far as possible. All drawers and shelves should remain in the appliance to keep the temperature stable and save energy.
- To obtain a larger storage space (e.g. for large refrigerated/frozen goods), the middle drawers can be removed. The top and bottom drawers and shelves should be removed last if necessary.
- An evenly filled refrigerator/freezer compartment contributes to optimal energy use. Therefore, avoid empty or half-empty compartments.
- Allow warm food to cool before placing it in the refrigerator/freezer. Food that has already cooled down increases energy efficiency.
- Allow frozen food to defrost in the refrigerator. The coldness of the frozen food reduces the energy consumption in the refrigerator compartment and thus increases the energy efficiency.
- Open the door only as briefly as necessary to minimise cold loss. Opening the door briefly and closing it properly reduces energy consumption.
- The door seals of your appliance must be perfectly intact so that the doors close properly and energy consumption is not increased unnecessarily.

OPERATION INSTRUCTIONS

EN

Control panel




	Display		Button
1	Refrigerating icon	A	Temperature up button
2	Wireless Connection icon	B	Temperature zone selection button
3	Super cool / freezing icon	C	Temperature down button
4	Fruit/vegetable icon	D	Vario temp select/ Wireless Connection
5	Drink icon	E	Lock/Unlock button
6	Freezer icon		
7	Temperature display icon		
8	Lock icon		
9	Meat icon		





ATTENTION

The actual control panel may differ from model to model.
The control panel will turn off automatically for energy saving.

Display

- When electrify the refrigerator, the display screen will total display for 3 seconds. Meanwhile the starting up bell rings and then the screen enters the normal display of the operation.
- The first time for using the refrigerator, the default set temperature of refrigerating chamber and freezing chamber is 5°C/-20°C respectively.
- When the error occurs, the display shows the error code (see next page); during normal running, the display shows the set temperature of the refrigerating chamber or freezing chamber.
- Under normal circumstances, if there is no operation on display panel or door opening action within 30s, then the display is lock, and the sate  goes out.

Lock /unlock

- In the unlocked state, long press the lock button  for 3 seconds, enter the lock state, the logo  goes out and buzzer sounds, it means the display panel is locked, at this time, button operation cannot be implemented;
- In the locked state, long press the lock button  for 3 seconds, enter the unlocked state, the logo  lights up and buzzer sounds, it means the display panel is unlocked, at this time, button operation can be implemented;

Temperature setting of refrigerating chamber

- Press temperature zone selection button **TEMP. SELECT** to choose the setting temperature zone of refrigerating chamber, and then press \wedge or \vee to adjust the setting temperature of refrigerating chamber. The temperature setting range for refrigerating chamber is 2°C ~ 8°C.

Temperature setting of freezing chamber

- Press temperature zone selection button **TEMP. SELECT** to choose the setting temperature zone of freezing chamber, and then press \wedge to \vee adjust the setting temperature of freezing chamber. The temperature setting range for refrigerating chamber is -24°C~-16°C.

Temperature setting of variable temperature chamber

- Press Variable temperature button **VARIO TEMP.** to adjust the setting temperature of the chamber, the adjusting range is Fruit/vegetable, drink and meat. Fruit/vegetable: Suitable for storing all kinds of fruits and vegetables; Drink: Suitable for storing dry goods and drinks; Meat: Suitable for a small amount of meat stored for 1-2 days.

Mode setting

- Set the Super cooling mode: after the temperature of the refrigeration room is adjusted to 2°C, press the temperature down button " \vee " to enter the super cooling mode. In the super cooling mode, the temperature of the refrigerating chamber is automatically set to 2°C.
- Exit the Super cooling mode: press the temperature up button " \wedge " to exit the super cooling mode or automatically exit the super cooling mode after 6h. After exiting the super cooling mode, the temperature of the refrigerator will automatically return to the temperature set before the super cooling mode.

ATTENTION

- Recommended setting: Refrigerated chamber 5°C, freezing chamber -20°C.
- The quick-freezing function is designed to maintain the nutritional value of the food in the freezer. It can freeze the food in the shortest time. If a large amount of food is frozen at one time, it is recommended that the user turn on the quick-freezing function and put the food in. At this time, the freezing speed of the freezer compartment is increased, which can quickly freeze the food, effectively lock the nutrition of the food, and facilitate storage.

- Set the super freezing mode: after the temperature of the freezing chamber is adjusted to -24°C, press the temperature down button “∨” to enter the super freezing mode. In the super freezing mode, the temperature of the freezing chamber is automatically set to -24°C.
- Exit the super freezing mode: press the temperature up button “∧” to exit the super freezing mode or automatically exit the super freezing mode after 40h. After exiting the super freezing mode, the freezing chamber temperature will automatically return to the temperature set before the super freezing mode.

Wireless Connection

- When electrify the refrigerator, press and hold the “VARIO TEMP” key for 3s to enter the distribution network mode. When the display shows AP, that means the hotspot is on, login SmartHome app with mobile phone, link the hotspot, complete the setup according to the instructions in the app. After setting the “📶” indicator will be on all the time.

Sabbath mode

- Unlock the fridge, and then press the “ ∨ ” and the lock button at the same time for 4 seconds, into the Sabbath mode. Press any key to exit. In this mode the fridge status:
 - a. Display control board and lights remain off, and no alarm.
 - b. The refrigerator cools normally.
 - c. Within five minutes of the door opening, compressor, fan motor status does not change.

Storage upon power failure

- In case of power failure, the instant working state will be locked and maintained till re-electrification.

Fault indication

- The following warnings appearing on the display indicate corresponding faults of the refrigerator. Though the refrigerator may still have cold storage function with the following faults, the user shall contact a maintenance specialist for maintenance, so as to ensure optimized operation of the appliance.

ATTENTION

- **Disable the door opening tone:** Press and hold both the temperature up button and temperature down button for 3 seconds to disable or set the door opening tone.
- **Disable the door opening alarm sound:** Not possible.

Error code

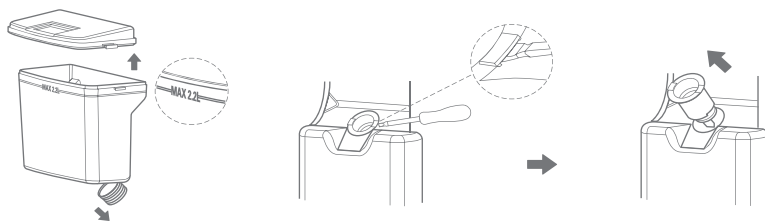
- The following warnings appearing on the display indicate corresponding faults of the refrigerator. Though the refrigerator may still have cold storage function with the following faults, the user shall contact a maintenance specialist for maintenance, so as to ensure optimized operation of the appliance.

Fault Code	Fault Description
E1	Temperature sensor failure of refrigerating chamber
E2	Temperature sensor failure of freezing chamber
E3	Temperature sensor failure of variable temperature chamber
E4	Failure of defrosting sensor in refrigerating chamber
E5	Freezing defrost sensor detection circuit error
E6	Communication error
E7	Circulation of temperature detection circuit error
EH	Moisture sensor error

Usage of water dispenser

Before using the water dispenser, clean the water tank and water valve component first

- First remove the small bottle frame above the water tank before remove the water tank.
- Take out the water tank by gripping it tightly on both sides, then with some force keep pulling it upward and toward your direction until removed.
- Open the clasp and take off the water tank cover and sealing ring, and wash the water tank, its cover and sealing ring under water. After washing, drain the water from inside the tank and reposition the cover and sealing ring. Make sure to lock the cover to the water tank on both sides. Make sure the sealing ring is replaced properly.
- Take out the water valve component by using a thin flat-headed tool to insert into the head of the water valve to pry it open, then pull out the water valve component and wash it under water.



- After washing, re-assemble it back. Align the bottom of the water valve component with the slot on the unit, then press down the water valve component until a click is heard. Check and ensure the water valve component sits and locks properly and securely on the unit.
- Insert the water tank into the water valve. Align the sealing ring with the water valve, then press down the water tank into the water valve until it sits properly and securely.

Filling the water tank

- Before filling with water, ensure that the water tank is steady and in a correct position.
- Pour drinking water into the water tank through the small lid. Close the lid after filling. If water injection is not convenient, remove the bottle frame above the water tank to obtain more water injection space.
- Apart from drinking water, other beverages (such as milk, juice, carbonated beverage, etc) are not suggested to be used, especially beverages that include grain must not be used (may result in blockage and damage).
- Hot water must not be filled into the water tank directly.
- Do not touch other parts of the unit when filling water, it may lead to leakage.

Receiving water from the water dispenser

- You should use the type of container that can fit under the water dispenser. Place the container properly underneath and push on the lever for water to flow.

ATTENTION

If the water in the water tank is not used for a long period, it is recommended that the water be replaced. If the water tank is used for the first time, or if it has been kept unused for a long period, it needs to be cleaned before use.

Cleaning the interior and the exterior of the unit

- Remove all the shelves and drawers.
- Wipe the inside of the unit with a weak solution of bicarbonate soda and then rinse with warm water using sponge or cloth. Wipe completely dry before replacing the shelves and drawers.
- Use a damp cloth to clean the exterior, and then wipe with a standard furniture polish. Make sure that the doors are closed to avoid the polish getting on the magnetic door seal or inside the unit.
- The grille of the condenser at the back of the unit and the adjacent components can be vacuumed using a soft brush attachment.

EN

Cleaning the water tank and water dispenser

- To clean the water tank, see the section “before using the water dispenser”.
- To clean the water dispenser, wipe it with damp towel regularly.

Tips on storing food

Freezer compartment

- The freezer is designated for the storage of food frozen at very low temperature, long-term storage of frozen food, and for the production of ice.
- Only use the shelves in the door of the freezer to store frozen food, not for storing hot food designated for freezing.
- Do not put fresh and frozen food next to each other. The frozen food may thaw.
- When freezing fresh food (such as meat, fish or chopped meat), cut them into parts that can be used at the same time.
- Storing frozen food: instructions are usually stated on the packages, which must be followed. If there is no information on the packaging, food should not be stored for longer than three months from the date of purchase.
- When purchasing frozen food, make sure that it was frozen at a suitable temperature and that the packaging is not damaged.
- Frozen food should be kept in suitable packages to retain the quality and should be returned to the freezer compartment as soon as possible.
- If a package of frozen food shows moisture or abnormal bulging, it is probable that it was stored at the wrong temperature and the content is spoiled.
- The storage period for frozen food depends on the room temperature, the thermostat setting, the frequency of opening the door of the freezer, the type of food and the time of transporting the product from the shop to the household. Always follow the instructions printed on the packaging and never exceed the maximum storage time stated on the package.

Cooling compartment

- To reduce moisture and subsequent ice build-up, never put liquid into the refrigerator in unsealed containers. Frost tends to concentrate in the coolest parts of the evaporator. Storing uncovered liquids results in a more frequent need for defrosting.
- Never put warm foods in the refrigerator. These should first cool down at room temperature and then be placed so as to ensure adequate air circulation in the refrigerator.
- Foods or food containers should not touch the back wall of the refrigerator because they could freeze to the wall. Do not keep regularly opening the door of the refrigerator.
- Meat and clean fish (packed in a package or plastic foil) can be placed in the refrigerator, which can be used in 1-2 days.
- Fruit and vegetables without packaging can be placed in the part designated for fresh fruit and vegetables.

Recommended Temperature

The optimal temperature setting for food storage:

- Fridge: 5 °C , Freezer: -20 °C.

ATTENTION

The optimal temperature setting of each compartment depends on the ambient temperature. Above optimal temperature is based on the ambient temperature of 25 °C.

Order	Compartments TYPE	Target storage temp. [°C]	Appropriate food
1	Fridge	+2 ~ +8	Eggs, cooked food, packaged food, fruits and vegetables, dairy products, cakes, drinks and other foods are not suitable for freezing.
2	(***)*-Freezer	≤-18	Seafood (fish, shrimp, shellfish), freshwater aquatic products and meat products (recommended for 3 months, the longer the storage time, the worse the taste and nutrition), suitable for frozen fresh food.
3	***-Freezer	≤-18	Seafood (fish, shrimp, shellfish), freshwater aquatic products and meat products (recommended for 3 months, the longer the storage time, the worse the taste and nutrition), suitable for frozen fresh food.
4	** -Freezer	≤-12	Seafood (fish, shrimp, shellfish), freshwater aquatic products and meat products (recommended for 3 months, the longer the storage time, the worse the taste and nutrition), suitable for frozen fresh food.
5	*-Freezer	≤-6	Seafood (fish, shrimp, shellfish), freshwater aquatic products and meat products (recommended for 3 months, the longer the storage time, the worse the taste and nutrition), suitable for frozen fresh food.
6	0-star	-6 ~ 0	Fresh pork, beef, fish, chicken, some packaged processed foods, etc. (Recommended to eat within the same day, preferably no more than 3 days). Partially encapsulated processed foods (non-freezable foods).
7	Chill	-2 ~ +3	Fresh/ frozen pork, beef, chicken, freshwater aquatic products, etc. (7 days below 0°C and above 0°C is recommended for consumption within that day, preferably no more than 2 days). Seafood (less than 0 for 15 days, it is not recommended to store above 0°C).
8	Fresh food	0 ~ +4	Fresh pork, beef, fish, chicken, cooked food, etc. (Recommended to eat within the same day, preferably no more than 3 days)
9	Wine	+5 ~+20	Red wine, white wine, sparkling wine, etc.

ATTENTION

please store different foods according to the compartments or target storage temperature of your purchased

APP SETUP AND OPERATION

Download the SmartHome App

On an app market (Google Play Store, Apple App Store), search for “SmartHome” and find the SmartHome app. Download and install it on your phone. You can also download the app by scanning the QR code below.



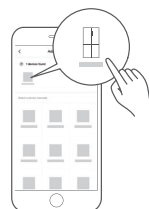
Register and log in

Open the SmartHome app, and create a new account to start (you can also register through a third-party account). If you already have an existing account, use the account to log in.



Connect your devices to SmartHome

1. Please make sure your mobile phone is connected to a wireless network. If it is not, go to Settings and enable wireless networks and Bluetooth.
2. Please power on your devices.
3. Open SmartHome App on your phone.
4. If a message of "Smart devices discovered nearby" appears, click to add.
5. If no message appears, select "+" on the page and select your device in the list of nearby devices available. If your device is not listed, please add your device manually by the device category and device model.
6. Connect your device to the wireless network according to instructions on app. If the connection fails, please follow the instructions provided by the app to continue with the operation.



NOTE

1. Make sure your devices are powered on.
2. Keep your mobile phone close enough to your device when you are connecting your device to the network.
3. Connect your mobile phone to the wireless network at home, and make sure you know the password of the wireless network.
4. Check if your wireless router supports 2.4 GHz band and turn it on. If you are not sure whether the router supports 2.4 GHz band, please contact the router manufacturer.
5. The device cannot connect to the wireless network that requires authentication, and it usually appears in public areas such as hotels, restaurants, etc. Please connect to a wireless network that does not require authentication.
6. Turn off the WLAN+ (Android) or WLAN Assistant (iOS) function of your mobile phone when connecting your device to the network.
7. In the case that your device connected to a wireless network before but it needs to reconnect, please click “+” on the app Home page, and add your device again by the device category and model according to the instructions on app.

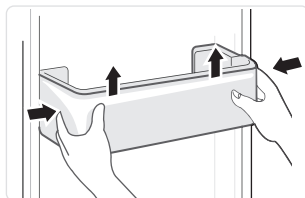
CLEANING AND MAINTENANCE

Defrosting

- The refrigerator is made based on the air-cooling principle and thus has automatic defrosting function. Frost formed due to change of season or temperature may also be manually removed by disconnection of the appliance from power supply or by wiping with a dry towel.

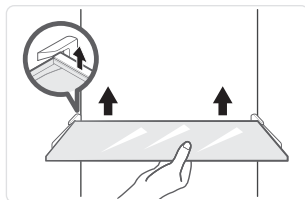
Cleaning of door tray

- According to the direction arrow in the figure below, use both hands to squeeze the tray, and push it upward, then you can take it out.
- After washing the tray having been taken out, you can adjust its installing height in accordance with your requirement.



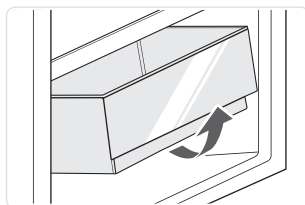
Cleaning of glass shelf

- As the innermost part of the refrigerator liner where contacting the shelves has a backstop, you shall raise the shelves upward, then you can be able to take it out.
- Adjust or clean the shelves according to your requirement.



Cleaning the vegetable drawer

1. Remove the contents of the drawer. Hold the handle of the vegetable drawer and pull it out completely until it stops.
2. Lift the vegetable drawer up and remove it by pulling it out.



● ATTENTION

Soft towels or sponge dipped in water and non-corrosive neutral detergents are suggested for cleaning. The freezer of shall be finally cleaned with clean water and dry cloth. Open the door for natural drying before the power is turned on. Do not use hard brushes, clean steel balls, wire brushes, abrasives, such as toothpastes, organic solvents (such as alcohol, acetone, banana oil, etc.), boiling water, acid or alkaline items clean refrigerator considering that this may damage the fridge surface and interior.

TROUBLESHOOTING

The following simple issues can be handled by the user. Please call the after-sale service department if the issues are not solved.

Problem	Possible reason
Failed operation	• Check whether the appliance is connected to power or whether the plug is in well contact
	• Check whether the voltage is too low
	• Check whether there is a power failure or partial circuits have tripped
Odor	• Odorous foods shall be tightly wrapped
	• Check whether there is any rotten food
	• Clean the inside of the refrigerator
Long-time operation of the compressor	• Long operation of the refrigerator is normal in summer
	• when the ambient temperature is high It is not suggestible having too much food in the appliance at the same time
	• Food shall get cool before being put into the appliance
	• The doors are opened too frequently
Light fails to get lit	• Check whether the refrigerator is connected to power supply and whether the illuminating light is damaged
	• Have the light replaced by a specialist
Door can not be properly closed	• The door is stuck by food packages Too much food is placed
	• The refrigerator is tilted.
Loud noises	• Check whether the floor is level and whether the refrigerator is placed stably
	• Check whether accessories are placed at proper locations

EN

Problem	Possible reason
Door seal fails to be tight	<ul style="list-style-type: none"> Remove foreign matters on the door seal
	<ul style="list-style-type: none"> Heat the door seal and then cool it for restoration (or blow it with an electrical drier or use a hot towel for heating)
Water pan overflows	<ul style="list-style-type: none"> There is too much food in the chamber or food stored contains too much water,resulting in heavy defrosting
	<ul style="list-style-type: none"> The doors are not closed properly, resulting in frosting due to entry of air and increased water due to defrosting
Hot housing	<ul style="list-style-type: none"> Heat dissipation of the built-in condenser via the housing, which is normal When housing becomes hot due to high ambient temperature, storage of too much food or shutdown of the compressor is shut down, provide sound ventilation to facilitate heat dissipation
Surface condensation	<ul style="list-style-type: none"> Condensation on the exterior surface and door seals of the refrigerator is normal when the ambient humidity is too high. Just wipe the condensate with a clean towel.
Abnormal noise	<ul style="list-style-type: none"> Buzz: The compressor may produce buzzes during operation, and the buzzes are loud particularly upon start or stop. This is normal.
	<ul style="list-style-type: none"> Creak: Refrigerant flowing inside of the appliance may produce creak, which is normal.
Drinking water module fault	<ul style="list-style-type: none"> Leak: check that the water tank is installed correctly;
	<ul style="list-style-type: none"> No access to water: check that the water valve is properly installed or there is not enough water in the water tank



make yourself at home



www.midea.com

© Midea 2022 all rights reserved